

# HearLink<sup>®</sup>

## PLUS

## Long range, low latency, TV and music audio transmitter

If members of the household can't agree on the television volume or if you sometimes need help understanding television dialogue, we recommend the BeHear headset + HearLink PLUS transmitter bundle:

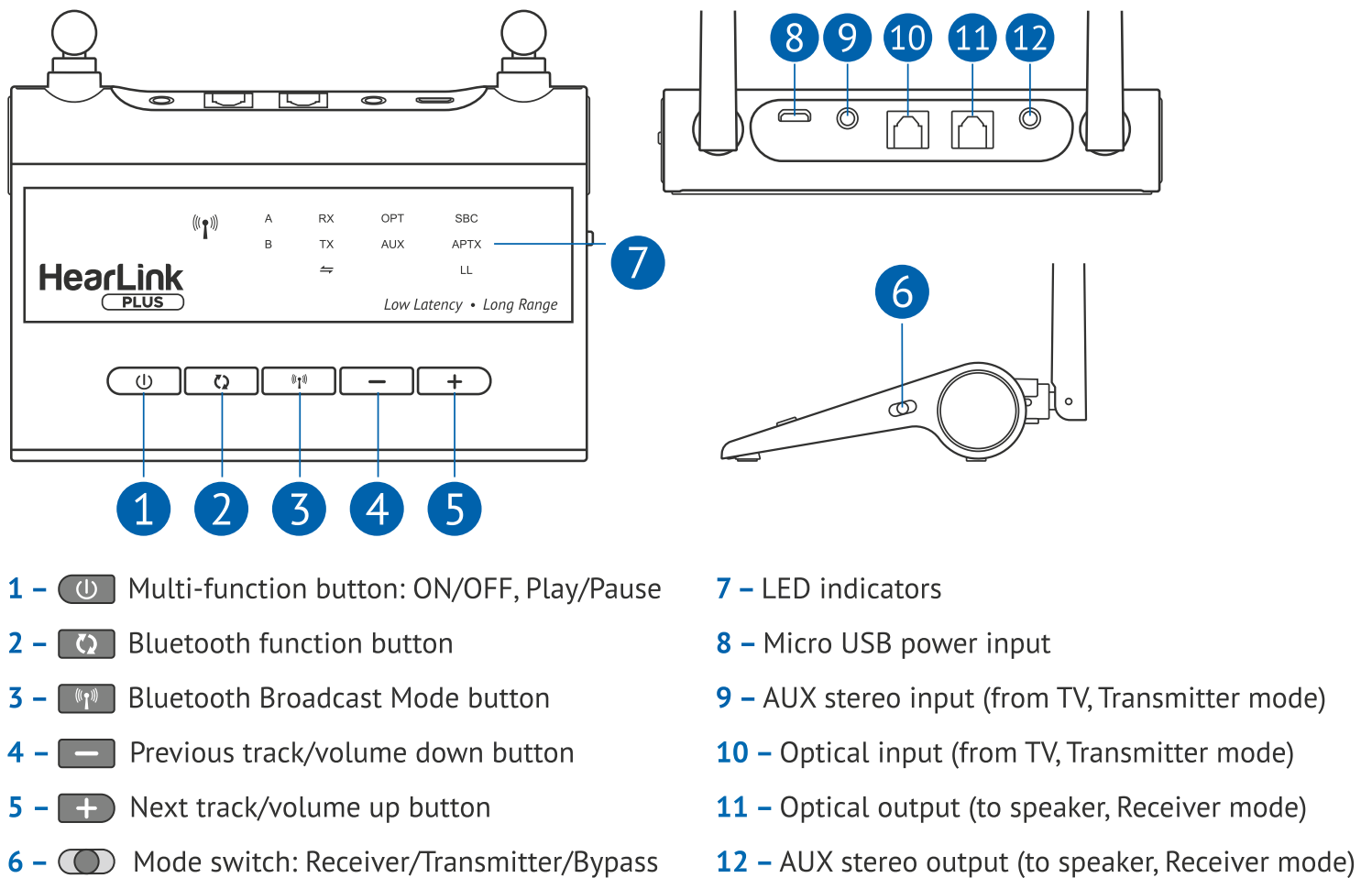


HearLink PLUS is a simple device that connects to the digital optical interface or analog sound output on any standard television or other audio device. Using Class I Bluetooth<sup>®</sup> it sends the audio signal to the BeHear<sup>®</sup> headset, which can be customized easily to suit the hearing capabilities and preferences of the wearer.

### Main Features

- Low latency audio streaming for optimal lip sync
- Long range connectivity of up to ~200 feet (~60 meters)
- Seamless operation with BeHear headsets with remote play/pause control
- AutoON (automatic 'power on' if charged from the television set USB port)
- Bypass mode enables single cable connection to additional auxiliary speaker
- Bluetooth receiver and broadcast modes supported

## Mechanical Diagram



## Specifications

Model No.	BT5805A
Bluetooth version	V5.0, Class I
Operating range	Tx mode: up to ~200' (~60m); Rx mode: up to ~130' (~40m)
Supported profiles	A2DP, AVRCP
Supported audio codecs	aptX™ Low Latency, aptX™, SBC
Input/output audio	Stereo analog audio, optical fiber digital audio
Power supply	5VDC, micro-USB
Current consumption	Up to 220mA
Operating temperature	14 - 131°F (-10 - 55°C)
Net weight	3.5 oz. (99 grams)
Dimensions	5.0 x 3.35 x 1.05 inches (127mm x 85mm x 26.3mm)

BeHear headsets and audio equipment sold separately. Specifications subject to change without prior notice.